

Welcome to Atelierhaus Salzamt

CONTACT

Atelierhaus Salzamt
Obere Donaulände 15
4020 Linz
Austria

Phone: +43 732 7070-1959
E-Mail: salzamt@mag.linz.at
Website: <http://salzamt.linz.at>
Blog: <http://blog.salzamt-linz.at>

Team:
Holger Jagersberger
Clemens Mairhofer

Preface

The Atelierhaus Salzamt is a cultural institution of the city of Linz, which was established in mid-2009. The aim is to promote the international exchange of artists in the field of visual arts.

The house, which emerged from the former baroque "Salzstadl", is centrally located directly at the Danube and serves as a living and working facility for domestic and foreign artists. Among other things, the house comprises 5 apartments, 9 studios and an exhibition space.

Atelierhaus Salzamt's goal is to give young international and local artists the opportunity to work in a new environment unencumbered by the usual daily routine and to exchange and collaborate with colleagues. For this purpose, they are provided with an apartment and studio free of charge for the duration of their stay of 1 to 3 months. In addition, the artists receive a grant to cover their living expenses. If necessary, tools and equipment will be lent to the artists.

This brochure describes the surroundings and the possibilities of the house and should contribute to a smooth and pleasant stay.



ARRIVAL

By train

At Linz Main Station follow the signs to the tram in the direction of the city centre. You can use all four lines (1, 2, 3 or 4). Get off at the stop Hauptplatz. From there it is a 5 minute walk to the Atelierhaus Salzamt.

By plane via Linz Airport

From the airport take the airport bus 601 to Linz main station. All information about arrival and departure from the airport can be found here: <http://www.linz-airport.com/en/approach-and-parking>. Note: Since the airport is very small not a lot of international connections are offered

By plane via Vienna Airport

There is a direct train from Vienna Airport to Linz Main Station. Connections run hourly and every day. The journey takes about 2 hours. More information here: <https://www.oebb.at/en/regionale-angebote/ueberregionale-angebote/anreise-zum-flughafen>

By car

Simply enter Atelierhaus Salzamt as your destination address in Google Maps. The nearest motorway connection is Linz Hafenstraße. Note: It is not recommended to travel by car. Free parking spaces are rare!



Footpath from the main square to Atelierhaus Salzamt

TRANSPORT

The Atelierhaus is located near the city centre, therefore many places are reachable by walk or by bike.

Public Transport in the City

If you take the bus or the tram you need to buy a ticket from one of the ticket machines found at every stop. You can choose between Kurzstrecke (Short Distance), Langstrecke (Long Distance), 24 hours or Monthly Tickets. Multi-trip and day tickets are also available at the cigarette shops (Trafik). Please make sure to buy the ticket before you enter the public transport - if you are caught without a valid ticket it will cost you 70 €.

Find timetable informations here: <https://services.linzag.at/efa/index-en.jsf#>

Public Transport within Austria/Europe

If you would like to visit other Austrian/European cities or the countryside the train is your best option.

Austrian Railways ÖBB: (<https://www.oebb.at/>)

Private train company Westbahn (<https://westbahn.at/>).

Bikes

Salzamt provides its guests with 5 bicycles, which can be found in the inner courtyard. The number combination of the bicycle lock is 40404.

Taxi

+43 (0)732 6969

+43 (0)732 2244

Emergency Phone Numbers

Fire department: 122

Police: 133

Ambulance: 144

European Emergency Number: 112

POINTS OF INTEREST

Supermarkets

Eurospar (Landstraße 17-25)

Mo - Fr: 7:40am - 7:30pm, Sat 7:40 - 6pm

Sunday closed

BILLA (Landstraße 60)

Mo - Fr: 7:30am - 7:30pm, Sat 7:30 - 6pm

Sunday closed

Spar (Railway Station),

open every day from 5am - 11pm

Hardware stores

Bauhaus Linz, Industriezeile 64

Obi, Freistädter Str. 302 or Kornstraße 2

Conrad (Electronics), Kornstraße 4

Flea markets

every Saturday morning until 1pm at mainsquare. From 10th of November till the end of February, at "Neues Rathaus" in Urfahr.

every Sunday morning at Industriezeile 76 - inside the Interspar parking garage

Second-hand shops

moshi (<http://moschi.org/>) Rainerstraße 13

carla: Baumbachstraße 3

Arge Trödlerladen: Bischofsstraße 7

Volkshilfe Shop: Hessenplatz 11

Art Supplies

Gerstaecker Linz (<https://www.gerstaecker.at/>) Peter-Behrens-Platz 9-10

Museums

Lentos, (www.lentos.at) Ernst-Koref-Promenade 1

OK Offenes Kulturhaus Linz, (www.ok-centrum.at) OK-Platz 1

Landesgalerie Linz, (<http://www.landeseuseum.at>) Museumstraße 14

Nordico, (www.nordico.at) Dametzstraße 23

Schlossmuseum (<http://www.landeseuseum.at>), Schlossberg 1

Ars Electronica Museum (www.ars.electronica.art)

Art spaces

bb15, (<http://bb15.at/>) Hafnerstraße 4

Memphis, (<http://www.memphismemph.is/>) Untere Donaulände 12

Tresor, (<https://www.facebook.com/tresorlinz>) Hauptplatz - Concerts in a private basement

Edition: (www.editiondoppelpunkt.at), Graben 7

Raumschiff, (www.raum-schiff.at) Pfarrplatz 18

Efes 42, (<http://www.efes42.at>) Schillerstrasse 42

RESIDENCY DETAILS

Upon arrival, room and studio keys are handed over to the guest and a brief tour of the house is given.

Keys

Always carry the keys with you. They can also be used to unlock the main entrance door, the door at the staircase and the door to the laundry room. Lock the apartment and studio when leaving.

Scholarship

The scholarship will be paid to the guest as soon as possible after the formalities are completed. Please come to the office for this purpose.

Smoking

Smoking is prohibited throughout the house. Smoking is only allowed in the courtyard.

Windows

Always close the outer windows before leaving the apartment or studio.

Community kitchen

You may use the community kitchen at all times. Keep it clean and dispose of old food.

Garbage disposal

In the garbage room in the courtyard there is one paper and two residual waste containers. If larger quantities of special waste (glass, metal, plastic) are produced, please dispose of them separately. The way (approx. 5 min walk) to the appropriate containers is shown on a map in the kitchen.

Equipment

Equipment or tools for artistic work can be borrowed during the stay. (Complete equipment list at <http://blog.salzamt-linz.at/downloads>) If you have any questions or problems, the Salzamt team will be happy to help you.

Doorbell

At the main entrance and in the courtyard there are bell systems for studios and apartments. In the apartments and the studios are the remote stations. When the doorbell rings there, press the F2 button once to switch on the intercom. Press F2 again to open the door.

Laundry

Laundry can be washed and dried in the laundry room in the basement. Detergent has to be purchased by yourself.

Departure

At the end of their stay all guest artists are asked to send a short project report including a photo to salzamt@mag.linz.at.

Apartments and studios must be cleaned before departure. All objects, food and other materials brought or accumulated during the stay must either be brought home, given away, sold or disposed of. Please wash the bed linen or at least give it to the laundry. On departure, all items on loan and keys must be returned.

The house and its facilities

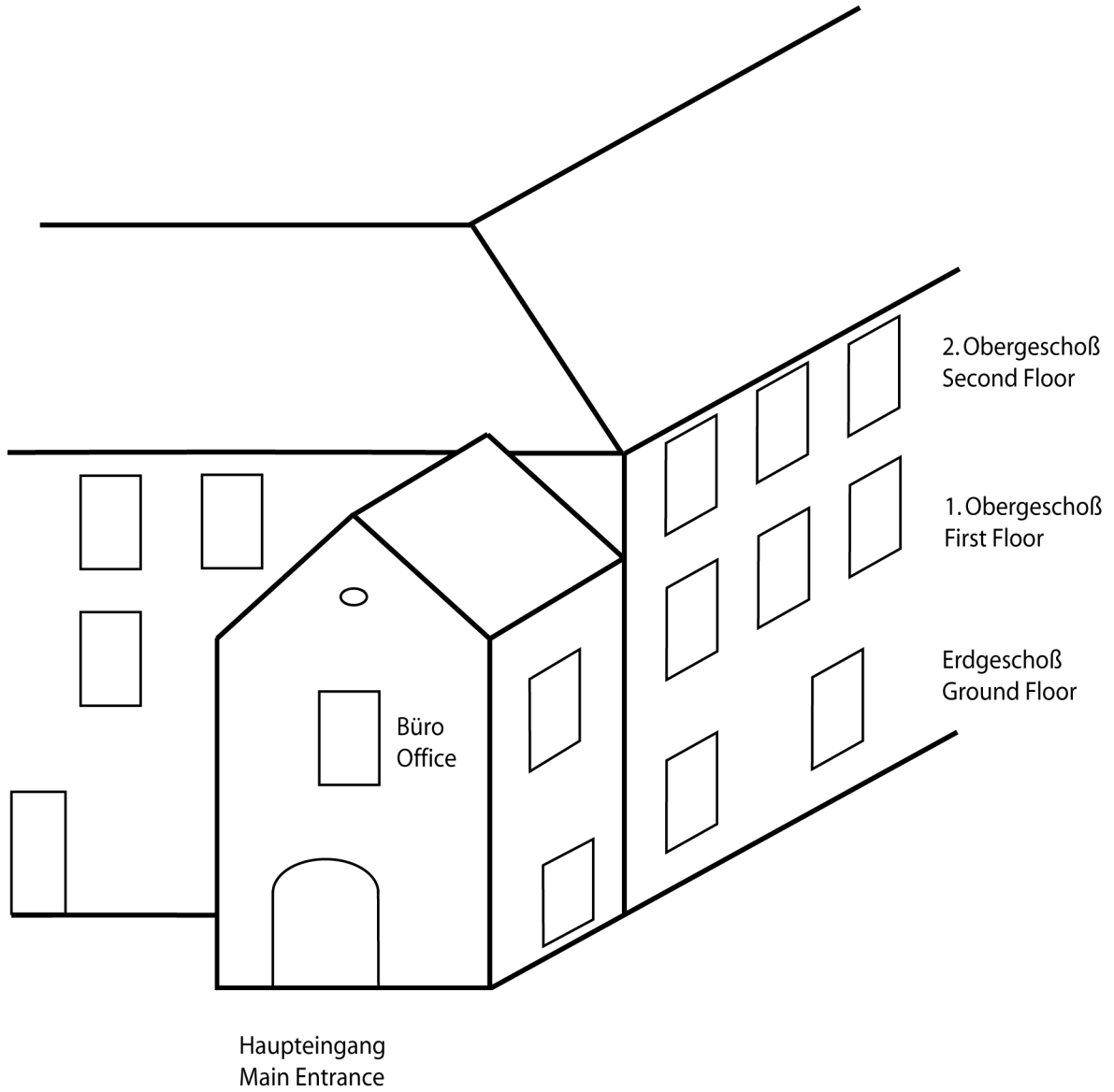
The house has three floors, supplemented by a basement and an attic.

On the ground floor there is an entrance hall, exhibition space and a restaurant. The first floor houses a communal kitchen, the office, as well as apartments and studios. Further studios and apartments are located on the second floor. The attic is used as a storage space and is usually not accessible. In the basement there is a laundry room with washing machine and dryer in addition to the workshop and storage rooms. Bicycles can be parked in the inner courtyard. The garbage room is located at the end of the courtyard.

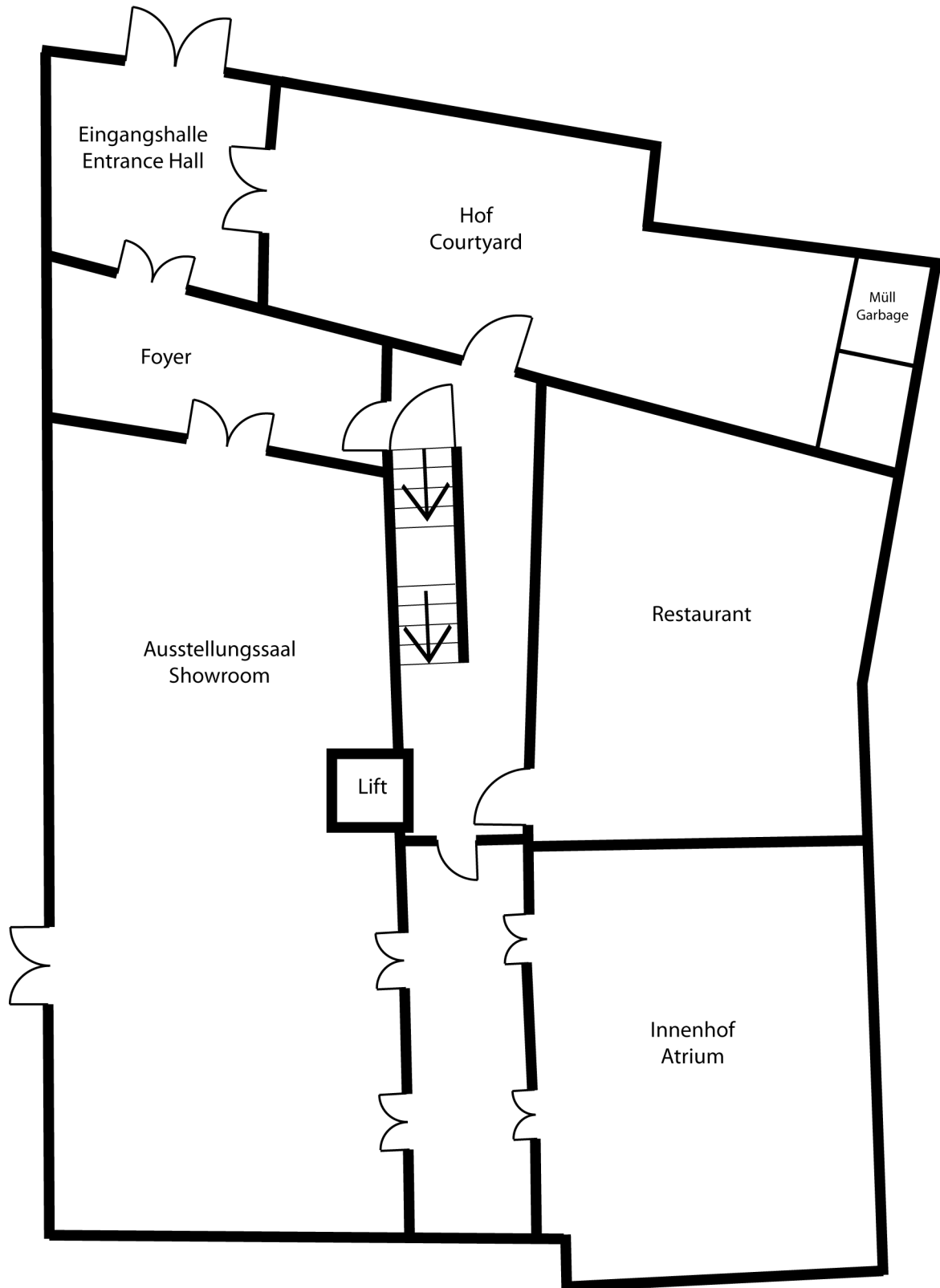
The following sketches give an overview

Atelierhaus Salzamt

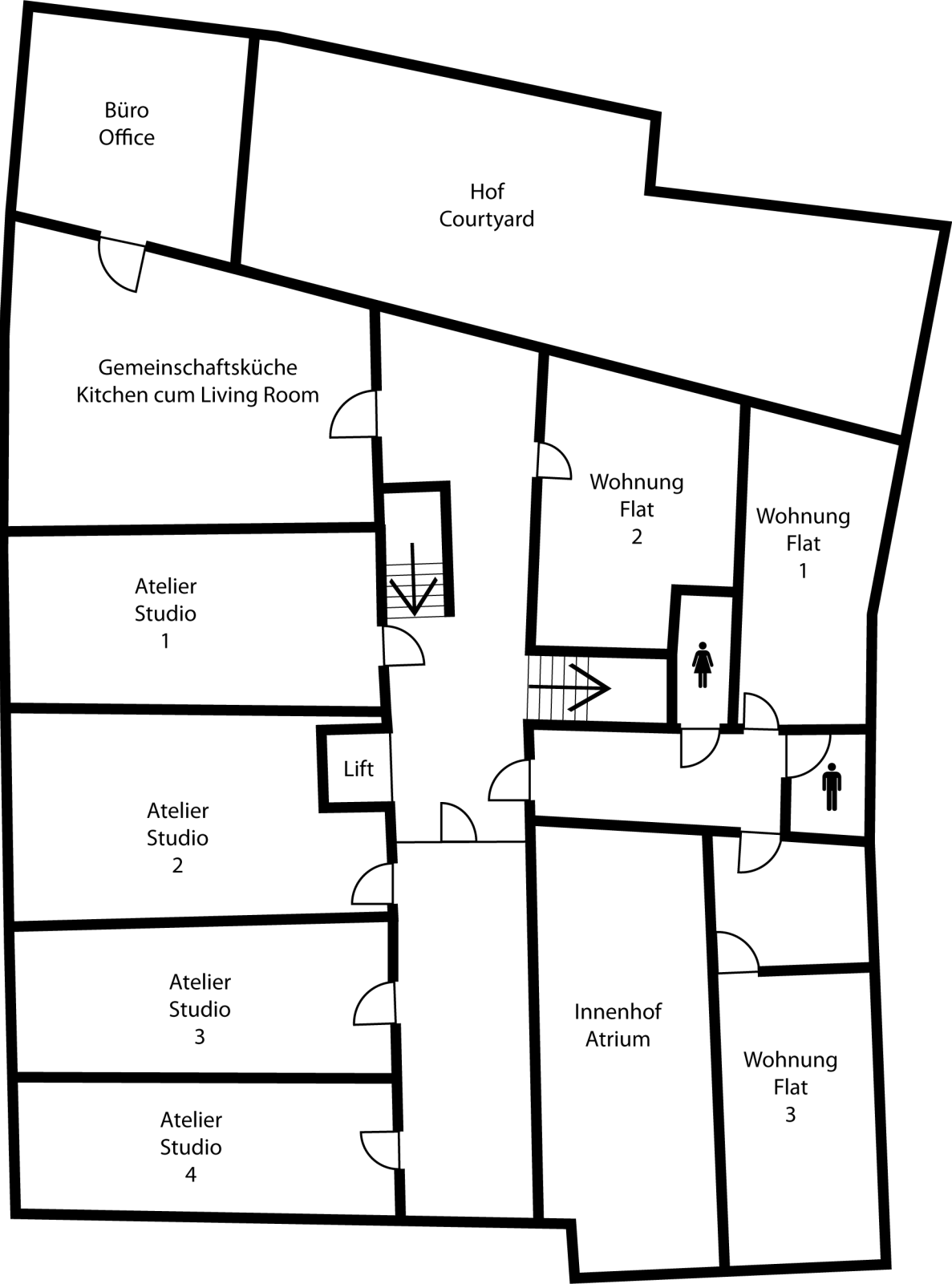
Gesamtansicht / Overall View



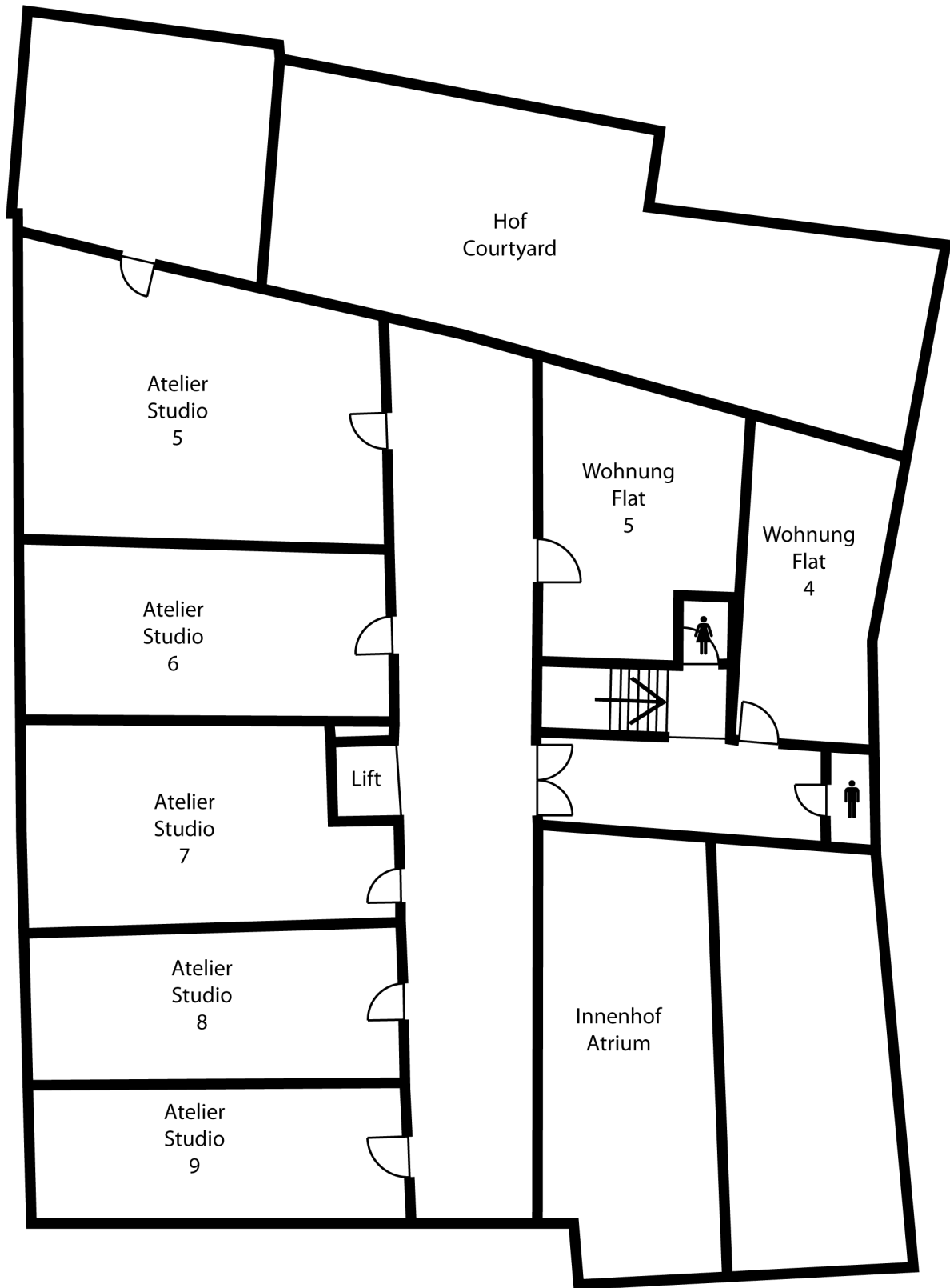
Erdgeschoß / Ground Floor



Erstes Obergeschoß / First Floor



Zweites Obergeschoß / Second Floor



Kellergeschoß / Basement

